

Quality ID #110 (NQF 0041): Preventive Care and Screening: Influenza Immunization
– National Quality Strategy Domain: Community/Population Health
– Meaningful Measure Area: Preventive Care

2019 COLLECTION TYPE:
MIPS CLINICAL QUALITY MEASURES (CQMS)

MEASURE TYPE:
Process

DESCRIPTION:
Percentage of patients aged 6 months and older seen for a visit between October 1 and March 31 who received an influenza immunization OR who reported previous receipt of an influenza immunization

INSTRUCTIONS:
This measure is to be submitted a minimum of **once for visits for patients seen** between January and March for the 2018-2019 influenza season AND a minimum of **once for visits for patients seen** between October and December for the 2019-2020 influenza season. This measure is intended to determine whether or not all patients aged 6 months and older received (either from the submitting Merit-based Incentive Payment System (MIPS) eligible clinician or from an alternate care provider) the influenza immunization during the flu season. There is no diagnosis associated with this measure. This measure may be submitted by MIPS eligible clinicians who perform the quality actions described in the measure based on the services provided and the measure-specific denominator coding.

- If submitting this measure between January 1, 2019 and March 31, 2019, quality-data code **G8482** should be submitted when the influenza immunization is administered to the patient during the months of August, September, October, November, and December of 2018 or January, February, and March of 2019 for the flu season ending March 31, 2019.
- If submitting this measure between October 1, 2019 and December 31, 2019, quality-data code **G8482** should be submitted when the influenza immunization is administered to the patient during the months of August, September, October, November, and December of 2019 for the flu season ending March 31, 2020.
- Influenza immunizations administered during the month of August or September of a given flu season (either 2018-2019 flu season OR 2019-2020 flu season) can be submitted when a visit occurs during the flu season (October 1 - March 31). In these cases, **G8482** should be submitted.

Measure Submission Type:

Measure data may be submitted by individual MIPS eligible clinicians, groups, or third party intermediaries. The listed denominator criteria are used to identify the intended patient population. The numerator options included in this specification are used to submit the quality actions as allowed by the measure. The quality-data codes listed do not need to be submitted by MIPS eligible clinicians, groups, or third party intermediaries that utilize this modality for submissions; however, these codes may be submitted for those third party intermediaries that utilize Medicare Part B claims data. For more information regarding Application Programming Interface (API), please refer to the Quality Payment Program (QPP) website.

DENOMINATOR:
All patients aged 6 months and older seen for a visit during the measurement period

DENOMINATOR NOTE: For the purposes of the program, in order to submit on the flu season 2018-2019, the patient must have a qualifying encounter between January 1 and March 31, 2019. In order to submit on the flu season 2019-2020, the patient must have a qualifying encounter between October 1 and December 31, 2019. A qualifying encounter needs to occur within the flu season that is being submitted; any additional encounter(s) may occur at any time within the measurement period.

*Signifies that this CPT Category I code is a non-covered service under the Medicare Part B Physician Fee Schedule (PFS). These non-covered services should be counted in the denominator population for MIPS CQMs.

Denominator Criteria (Eligible Cases):

Patients aged ≥ 6 months seen for a visit between October 1 and March 31

AND

Patient encounter during January thru March and/or October thru December (CPT or HCPCS): 90945, 90947, 90951, 90952, 90953, 90954, 90955, 90956, 90957, 90958, 90959, 90960, 90961, 90962, 90963, 90964, 90965, 90966, 90967, 90968, 90969, 90970, 99201, 99202, 99203, 99204, 99205, 99212, 99213, 99214, 99215, 99241*, 99242*, 99243*, 99244*, 99245*, 99304, 99305, 99306, 99307, 99308, 99309, 99310, 99315, 99316, 99324, 99325, 99326, 99327, 99328, 99334, 99335, 99336, 99337, 99341, 99342, 99343, 99344, 99345, 99347, 99348, 99349, 99350, 99381*, 99382*, 99383*, 99384*, 99385*, 99386*, 99387*, 99391*, 99392*, 99393*, 99394*, 99395*, 99396*, 99397*, 99401*, 99402*, 99403*, 99404*, 99411*, 99412*, 99429*, 99512*, G0438, G0439

WITHOUT:

Telehealth Modifier: GQ, GT, 95, POS 02

NUMERATOR:

Patients who received an influenza immunization OR who reported previous receipt of an influenza immunization

Definition:

Previous Receipt – Receipt of the current season’s influenza immunization from another provider OR from same provider prior to the visit to which the measure is applied (typically, prior vaccination would include influenza vaccine given since August 1st).

Numerator Instructions:

The numerator for this measure can be met by submitting either administration of an influenza vaccination or that the patient reported previous receipt of the current season’s influenza immunization. If the performance of the numerator is not met, a MIPS eligible clinician can submit a valid denominator exception for having not administered an influenza vaccination. For MIPS eligible clinicians submitting a denominator exception for this measure, there should be a clear rationale and documented reason for not administering an influenza immunization if the patient did not indicate previous receipt, which could include a medical reason (e.g., patient allergy), patient reason (e.g., patient declined), or system reason (e.g., vaccination not available). The system reason should be indicated only for cases of disruption or shortage of influenza vaccination supply.

As a result of updated CDC/ACIP guidelines which include the interim recommendation that live attenuated influenza vaccine (LAIV) should not be used due to low effectiveness against influenza A(H1N1)pdm09 in the United States during the 2013–14 and 2015–16 seasons, LAIV or intranasal flu vaccine is no longer an option for numerator eligibility.

NUMERATOR NOTE: Denominator Exception(s) are determined at the time of the denominator eligible encounter during the current flu season.

Numerator Options:

Performance Met:

Influenza immunization administered or previously received (**G8482**)

OR

Denominator Exception:

Influenza immunization was not administered for reasons documented by clinician (e.g., patient allergy or other medical reasons, patient declined or other patient

reasons, vaccine not available or other system reasons)
(G8483)

OR

Performance Not Met:

Influenza immunization was not administered, reason not given (G8484)

RATIONALE:

Influenza vaccination is the most effective protection against influenza virus infection (CDC, 2016). Influenza may lead to serious complications including hospitalization or death (CDC, 2016). Influenza vaccine is recommended for all persons aged ≥ 6 months who do not have contraindications to vaccination. However, data indicate that less than half of all eligible individuals receive an influenza vaccination (CDC, 2015). This measure promotes annual influenza vaccination for all persons aged ≥ 6 months.

CLINICAL RECOMMENDATION STATEMENTS:

The following evidence statements are quoted verbatim from the referenced clinical guidelines.

Routine annual influenza vaccination is recommended for all persons aged ≥ 6 months who do not have contraindications. Optimally, vaccination should occur before onset of influenza activity in the community. Health care providers should offer vaccination by October, if possible. Vaccination should continue to be offered as long as influenza viruses are circulating. (CDC/Advisory Committee on Immunization Practices (ACIP), 2017)

COPYRIGHT:

The Measure is not a clinical guideline, does not establish a standard of medical care, and has not been tested for all potential applications.

The Measure, while copyrighted, can be reproduced and distributed, without modification, for noncommercial purposes, eg, use by health care providers in connection with their practices. Commercial use is defined as the sale, license, or distribution of the Measure for commercial gain, or incorporation of the Measure into a product or service that is sold, licensed or distributed for commercial gain.

Commercial uses of the Measure requires a license agreement between the user and the PCPI® Foundation (PCPI®) or the American Medical Association (AMA). Neither the American Medical Association (AMA), nor the AMA-convened Physician Consortium for Performance Improvement® (AMA-PCPI), nor PCPI, nor their members shall be responsible for any use of the Measure.

AMA and PCPI encourage use of the Measure by other health care professionals, where appropriate.

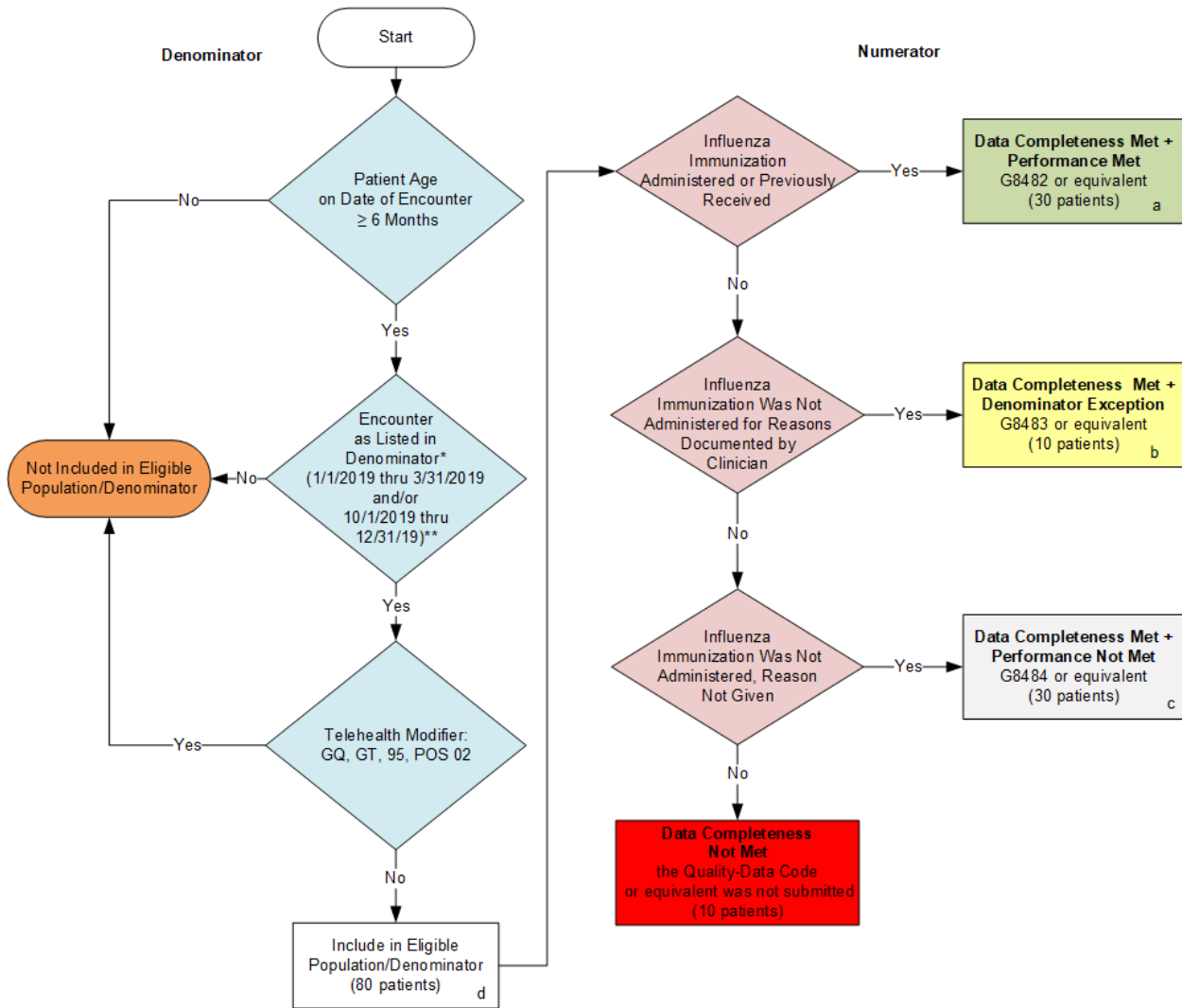
THE MEASURE AND SPECIFICATIONS ARE PROVIDED "AS IS" WITHOUT WARRANTY OF ANY KIND.

© 2018 PCPI® Foundation and American Medical Association. All Rights Reserved.

Limited proprietary coding is contained in the Measure specifications for convenience. Users of the proprietary code sets should obtain all necessary licenses from the owners of these code sets. The AMA, the PCPI and its members and former members of the AMA-PCPI disclaim all liability for use or accuracy of any Current Procedural Terminology (CPT®) or other coding contained in the specifications.

CPT® contained in the Measure specifications is copyright 2004-2018 American Medical Association. LOINC® is copyright 2004-2018 Regenstrief Institute, Inc. This material contains SNOMED Clinical Terms® (SNOMED CT®) copyright 2004-2018 International Health Terminology Standards Development Organisation. ICD-10 is copyright 2018 World Health Organization. All Rights Reserved.

2019 Clinical Quality Measure Flow for Quality ID #110 NQF #0041: Preventive Care and Screening: Influenza Immunization



SAMPLE CALCULATIONS:

Data Completeness =

$$\frac{\text{Performance Met (a=30 patients)} + \text{Denominator Exception (b=10 patients)} + \text{Performance Not Met (c=30 patients)}}{\text{Eligible Population / Denominator (d=80 patients)}} = \frac{70 \text{ patients}}{80 \text{ patients}} = 87.50\%$$

Performance Rate =

$$\frac{\text{Performance Met (a=30 patients)}}{\text{Data Completeness Numerator (70 patients) - Denominator Exception (b=10 patients)}} = \frac{30 \text{ patients}}{60 \text{ patients}} = 50.00\%$$

*See the posted Measure Specification for specific coding and instructions to submit this measure.

**This measure is only to be submitted a minimum of once for visits occurring between January 1, 2019 and March 31, 2019 for the 2018-2019 influenza season AND a minimum of once for visits occurring between October 1, 2019 and December 31, 2019 for the 2019-2020 influenza season for patients seen during the performance period. If the patient is seen during both flu seasons, cycle through this flow diagram for each flu season during which the patient was seen for a visit.

NOTE: Submission Frequency: Patient-Periodic

CPT only copyright 2018 American Medical Association. All rights reserved.
 The measure diagrams were developed by CMS as a supplemental resource to be used in conjunction with the measure specifications. They should not be used alone or as a substitution for the measure specification.

**2019 Clinical Quality Measure Flow Narrative for Quality ID #110 NQF #0041:
Preventive Care and Screening: Influenza Immunization**

Please refer to the specific section of the specification to identify the denominator and numerator information for use in submitting this Individual Specification.

1. Start with Denominator
2. Check Patient Age:
 - a. If Patient Age is greater than or equal to 6 Months on Date of Encounter equals No during the measurement period, do not include in Eligible Population. Stop Processing.
 - b. If Patient Age is greater than or equal to 6 Months on Date of Encounter equals Yes during the measurement period, proceed to check Encounter Performed.
3. Check Encounter Performed:
 - a. If Encounter as Listed in the Denominator equals No, do not include in Eligible Population. Stop Processing.
 - b. If Encounter as Listed in the Denominator equals Yes, proceed to check Telehealth Modifier.
4. Check Telehealth Modifier:
 - a. If Telehealth Modifier equals Yes, do not include in Eligible Population. Stop Processing.
 - b. If Telehealth Modifier equals No, include in Eligible Population.
5. Denominator Population:
 - a. Denominator Population is all Eligible Patients in the Denominator. Denominator is represented as Denominator in the Sample Calculation listed at the end of this document. Letter d equals 80 patients in the Sample Calculation.
6. Start Numerator
7. Check Influenza Immunization Administered or Previously Received:
 - a. If Influenza Immunization Administered or Previously Received equals Yes, include in Data Completeness Met and Performance Met.
 - b. Data Completeness Met and Performance Met letter is represented in the Data Completeness and Performance Rate in the Sample Calculation listed at the end of this document. Letter a equals 30 patients in the Sample Calculation.
 - c. If Influenza Immunization Administered or Previously Received equals No, proceed to check Influenza Immunization Was Not Administered for Reasons Documented by Clinician.
8. Check Influenza Immunization Was Not Administered for Reasons Documented by Clinician:
 - a. If Influenza Immunization Was Not Administered for Reasons Documented by Clinician equals Yes, include in Data Completeness Met and Denominator Exception.

- b. Data Completeness Met and Denominator Exception letter is represented in the Data Completeness and Performance Rate in the Sample Calculation listed at the end of this document. Letter b equals 10 patients in the Sample Calculation.
 - c. If Influenza Immunization Was Not Administered for Reasons Documented by Clinician equals No, proceed to check Influenza Immunization Was Not Administered, Reason Not Given.
9. Check Influenza Immunization Was Not Administered, Reason Not Given:
- a. If Influenza Immunization Was Not Administered, Reason Not Given equals Yes, include in the Data Completeness Met and Performance Not Met.
 - b. Data Completeness Met and Performance Not Met letter is represented in the Data Completeness in the Sample Calculation listed at the end of this document. Letter c equals 30 patients in the Sample Calculation.
 - c. If Influenza Immunization Was Not Administered, Reason Not Given equals No, proceed to check Data Completeness Not Met.
10. Check Data Completeness Not Met:
- a. If Data Completeness Not Met, the Quality Data Code or equivalent was not submitted. 10 patients have been subtracted from the Data Completeness Numerator in the Sample Calculation.

SAMPLE CALCULATIONS:

Data Completeness =

$$\frac{\text{Performance Met (a=30 patients)} + \text{Denominator Exception (b=10 patients)} + \text{Performance Not Met (c=30 patients)}}{\text{Eligible Population / Denominator (d=80 patients)}} = \frac{70 \text{ patients}}{80 \text{ patients}} = 87.50\%$$

Performance Rate =

$$\frac{\text{Performance Met (a=30 patients)}}{\text{Data Completeness Numerator (70 patients) - Denominator Exception (b=10 patients)}} = \frac{30 \text{ patients}}{60 \text{ patients}} = 50.00\%$$